



CORVETTE



CORVETTE
2017 EDITION



ACCESSORIES

DRIVE YOUR IMAGINATION.

With its provocative looks and precise performance, Corvette owns a distinct road presence. With endless personalization options available, you can let your imagination soar – and create your own legend.





PERFORMANCE-PROVEN PERSONALIZATION.

With thousands of looks to create, there's only one choice to ensure you match the high design and performance standards set forth by Corvette. Corvette Accessories hold an advantage of being designed, tested, engineered and backed by Chevrolet. Many of our accessories have been created in the same design studios, have spent time in the same wind tunnel and have been tested on the same tracks as Corvette.

Visit your Chevrolet Dealer today or shop online at chevrolet.com/accessories to create a Corvette look all your own.



Most Chevrolet Parts and Accessories sold and installed on a Chevrolet vehicle by a Chevrolet Dealer or a Chevrolet-approved Accessory Distributor/Installer (ADI) before delivery to the customer are covered under the applicable portion (Bumper-to-Bumper, Powertrain, etc.) of the New Vehicle Limited Warranty. If Chevrolet Accessories are installed after vehicle delivery, or are replaced under the New Vehicle Limited Warranty, they will be covered, parts and labor, for the longer of the following: a) 12 months/12,000 miles (whichever comes first), or b) the balance of the applicable portion of the New Vehicle Limited Warranty. See your dealer for details. GM Licensed and Associated Accessories are covered under the accessory-specific manufacturer's warranty and are not warranted by GM or its dealers. GM is not responsible for the safety or quality of independent supplier alterations.

Preproduction models shown. Actual production models may vary. Optional equipment shown on some models. GM reserves the right to make changes at any time, without notice, in prices, colors, materials, equipment, features, specifications, models, accessories and availability. Every Chevrolet Accessory has a quality story to tell. Find out more in the pages following, and see the full lineup of Chevrolet Accessories at chevrolet.com/accessories.

JOIN THE CONVERSATION

Post your #ChevroletPerformance photos and stay current @ChevroletPerformance on Instagram and Facebook. Tweet with us @ChevroletPerf.



CHEVROLET.COM/ACCESSORIES

MODELS

THE SKY'S THE LIMIT.

Corvette is always raising expectations and never standing still. It's ready to take on all challengers with an unmatched prowess and aesthetic. Three models – the precision-focused Stingray, track-bred Grand Sport and the high-powered Z06 – can take personalization to new heights.

Corvette vehicles shown with optional equipment.

¹ With available performance exhaust. ² With available Z51 Performance Package and 8-speed paddle-shift automatic transmission. Based on initial vehicle movement. ³ Do not use summer only tires in winter conditions, as it would adversely affect vehicle safety, performance and durability. Use only GM-approved tire and wheel combinations. Unapproved combinations may change the vehicle's performance characteristics. For important tire and wheel information, go to <https://my.chevrolet.com/learnAbout/chevrolettires> or see your dealer for details. ⁴ With available Z07 Performance Package and available 8-speed paddle-shift automatic transmission. Based on initial vehicle movement.



2018 STINGRAY

6.2L LT1 V8 ENGINE WITH 460 HORSEPOWER¹
AND 465 LB.-FT. OF TORQUE¹

0-60 MPH IN 3.7 SECONDS²

LOW, LIGHT AND LEAN DESIGN WITH
RACE-PROVEN AERODYNAMICS

FUNCTIONAL EXTERIOR VENTS TO HELP REDUCE
LIFT AND MINIMIZE DRAG

CUSTOMIZABLE GAUGE CLUSTER OPTIMIZED
FOR DRIVING MODES

7-SPEED MANUAL TRANSMISSION WITH ACTIVE
REV MATCH OR AVAILABLE 8-SPEED PADDLE-SHIFT
AUTOMATIC TRANSMISSION

AVAILABLE Z51 PERFORMANCE PACKAGE

19-INCH FRONT, 20-INCH REAR WHEELS
PAIRED WITH SPECIFIC MICHELIN® PILOT® SUPER
SPORT ZP-FITTED SUMMER-ONLY TIRES³

PERSONALIZE IT:



STINGRAY BLADE SPOILER
(PAGE 19)



STINGRAY EXPOSED CARBON FIBER GROUND
EFFECTS PACKAGE (PAGE 18)



2018 GRAND SPORT

6.2L LT1 V8 ENGINE WITH 460 HORSEPOWER AND 465 LB.-FT. OF TORQUE WITH DRY-SUMP OIL SYSTEM

1.2G LATERAL ACCELERATION WITH Z07 PERFORMANCE PACKAGE

0-60 MPH IN 3.6 SECONDS⁴

SPECIFIC FRONT FENDER INSERTS, Z06-STYLE GRILLE AND WIDER REAR FENDERS

FRONT SPLITTER, ROCKERS AND WICKERBILL REAR SPOILER (CARBON-FIBER GROUND EFFECTS AVAILABLE)

6-PISTON, 14.6-INCH FRONT AND 4-PISTON, 14.4-INCH REAR BREMBO[®] BRAKES

7-SPEED MANUAL TRANSMISSION WITH ACTIVE REV MATCH OR AVAILABLE 8-SPEED PADDLE-SHIFT AUTOMATIC TRANSMISSION

STANDARD MAGNETIC SELECTIVE RIDE CONTROL[™] AND ELECTRONIC LIMITED-SLIP DIFFERENTIAL (eLSD)

SPECIFIC GRAND SPORT CUP-STYLE WHEEL CHOICES (SILVER, BLACK, BLACK WITH RED STRIPE, MACHINED OR CHROME) PAIRED WITH P285/30ZR19 FRONT, P335/25ZR20 REAR MICHELIN[®] PILOT[®] SUPER SPORT SUMMER-ONLY TIRES³

AVAILABLE Z07 PERFORMANCE PACKAGE (INCLUDES CARBON CERAMIC BRAKES AND MICHELIN[®] SUMMER-ONLY CUP TIRES³)

2018 Z06

SUPERCHARGED 6.2L LT4 V8 ENGINE WITH 650 HORSEPOWER AND 650 LB.-FT. OF TORQUE

1.2G LATERAL ACCELERATION WITH Z07 PERFORMANCE PACKAGE

0-60 MPH IN 2.95 SECONDS⁴

GRILLE WITH DEDICATED BRAKE COOLING INTAKES AND WIDER OUTLETS WITH AIR DIFFUSERS

CARBON-FIBER HOOD WITH WIDE HOOD VENT OUTLET

WIDE FRONT FENDERS AND QUARTER PANELS

REAR FASCIA WITH LARGE VENTS

FRONT SPLITTER AND UNIQUE REAR SPOILER

P285/35ZR19 FRONT AND P335/25ZR20 REAR MICHELIN[®] PILOT[®] SUPER SPORT ZP-FITTED SUMMER-ONLY TIRES³

6-PISTON, 14.6-INCH FRONT AND 4-PISTON, 14.4-INCH REAR BREMBO[®] BRAKES

7-SPEED MANUAL TRANSMISSION WITH ACTIVE REV MATCH OR AVAILABLE 8-SPEED PADDLE-SHIFT AUTOMATIC TRANSMISSION

STANDARD MAGNETIC SELECTIVE RIDE CONTROL[™] AND ELECTRONIC LIMITED-SLIP DIFFERENTIAL (eLSD)

AVAILABLE Z07 PERFORMANCE PACKAGE (INCLUDES CARBON-CERAMIC BRAKES AND MICHELIN[®] SUMMER-ONLY CUP TIRES³)

PERSONALIZE IT:



GRAND SPORT LEATHER FLOOR CONSOLE LID (PAGE 28)



GRAND SPORT UNDERHOOD LINER (PAGE 20)

PERSONALIZE IT:



Z06 LEATHER FLOOR CONSOLE LID (PAGE 29)



Z06 PREMIUM FRONT CARPET FLOOR MATS (PAGE 24)

SPECIAL EDITION

**65 YEARS.
ONE SPEED.**

Celebrate 65 years of innovation with this limited edition that exemplifies Corvette performance. The Carbon 65 Edition is available on Grand Sport 3LT and Z06 3LZ coupe or convertible models and includes numerous carbon-fiber upgrades. These models will be produced with a unique VIN sequence (and will see limited production of 650 units). Available Summer 2017.





CARBON 65



2018 CARBON 65 EDITION

CERAMIC MATRIX GRAY EXTERIOR
(CONVERTIBLE MODEL INCLUDES BLUE TOP)

CARBON 65 EDITION DOOR GRAPHICS AND STRIPES

CARBON FLASH BADGE PACKAGE AND MIRRORS

EXPOSED CARBON-FIBER ROOF (COUPE)
OR TONNEAU COVER (CONVERTIBLE)

EXPOSED CARBON-FIBER WEAVE HOOD INSERT

19-INCH FRONT AND 20-INCH REAR BLACK
MACHINED-GROOVE ALUMINUM WHEELS
(GRAND SPORT) OR BLACK BLADE MACHINED-
GROOVE ALUMINUM WHEELS (Z06) PAIRED
WITH SUMMER-ONLY TIRES¹

EXPOSED CARBON-FIBER SPOILER AND
QUARTER INTAKE DUCTS (COUPE ONLY)

CARBON 65 EDITION CENTER CAPS

BLUE-PAINTED CALIPERS

JET BLACK SUEDE-WRAPPED INTERIOR
WITH BLUE STITCHING

CARBON-FIBER STEERING WHEEL RIM AND GLOSS
CARBON-FIBER INTERIOR TRIM

COMPETITION SPORT SEATS

CARBON 65 EDITION SILL PLATES

PERSONALIZE IT:



Z06 PREMIUM OUTDOOR ALL-WEATHER
COVER (PAGE 23)



FULLY RENDERED GRAND SPORT
PREMIUM INDOOR COVER (PAGE 22)

¹ Do not use summer only tires in winter conditions, as it would adversely affect vehicle safety, performance and durability. Use only GM-approved tire and wheel combinations. Unapproved combinations may change the vehicle's performance characteristics. For important tire and wheel information, go to <https://my.chevrolet.com/learnAbout/chevrolettires> or see your dealer for details.

PACKAGES

ADD A
SIGNATURE LOOK.





2018 GRAND SPORT HERITAGE PACKAGE

Personalize your Corvette like never before with multiple stripe and hash mark options.

FENDER HASH MARKS, AVAILABLE IN 6 COLORS:

TORCH RED
YELLOW
SHARK GRAY
HYPER GREEN
CARBON FLASH
VOLCANO ORANGE

INTERIOR ALUMINUM HASH MARKS

FLOOR MATS WITH GRAND SPORT LOGO

AVAILABLE GRAND SPORT CENTER STRIPE COLORS (ONLY AVAILABLE WITH HERITAGE PACKAGE)

6 AVAILABLE COLORS:

WHITE
GRAY
BLUE
RED
CARBON FLASH
SATIN BLACK

Admiral Blue exterior with Arctic White stripe gets body-color spoiler.



STANDARD AND AVAILABLE FEATURES

ENGINE/CHASSIS	STINGRAY			GRAND SPORT			Z06		
	1LT	2LT	3LT	1LT	2LT	3LT	1LZ	2LZ	3LZ
Engine:									
6.2L LT1 V8 with Direct Injection, Variable Valve Timing and Active Fuel Management™	●	●	●	●	●	●	–	–	–
6.2L LT4 supercharged V8 with Direct Injection, Variable Valve Timing and Active Fuel Management	–	–	–	–	–	–	●	●	●
Dry-sump oil system	○ ¹	○ ¹	○ ¹	●	●	●	●	●	●
Oil-life monitoring system and engine oil cooler	●	●	●	●	●	●	●	●	●
Transmission:									
7-speed manual with Active Rev Matching and launch control	●	●	●	●	●	●	●	●	●
8-speed paddle-shift with automatic mode and remote vehicle starter system	○	○	○	○	○	○	○	○	○
Driver Mode Selector with five modes	●	●	●	●	●	●	●	●	●
Electronic Limited-Slip Differential (eLSD) with rear differential cooler	○ ¹	○ ¹	○ ¹	●	●	●	●	●	●
Exhaust:									
Aluminized stainless steel with 3" polished stainless steel tips	●	●	●	–	–	–	–	–	–
Performance with 4" polished stainless steel tips and aggressive exhaust sound	○	○	○	●	●	●	●	●	●
Suspension:									
4-wheel independent	●	●	●	●	●	●	●	●	●
Magnetic Selective Ride Control™ and Performance Traction Management	○ ¹	○ ¹	○ ¹	●	●	●	●	●	●
Magnetic Selective Ride Control, also includes Z51-style rear spoiler, 19" front and 20" rear wheels, and P245/35ZR19 front and P285/30ZR20 rear run-flat summer-only tires ²	○	○	○	–	–	–	–	–	–
Brakes:									
4-wheel ventilated disc with ABS and Panic Brake Assist	●	●	●	●	●	●	●	●	●
Carbon-ceramic high-performance brake system	–	–	–	○ ³	○ ³	○ ³	○ ³	○ ³	○ ³
Painted brake calipers:									
Dark Gray Metallic	●	●	●	○ ³	○ ³	○ ³	○ ³	○ ³	○ ³
Black	○ ¹	○ ¹	○ ¹	●	●	●	○ ⁴	○ ⁴	○ ⁴
Red	○	○	○	○	○	○	●	●	●
Yellow	○	○	○	○	○	○	○	○	○
Speed-sensitive Electric Power Steering (EPS) with variable ratio	●	●	●	●	●	●	●	●	●
Aluminum frame structure	●	●	●	●	●	●	●	●	●

EXTERIOR	STINGRAY			GRAND SPORT			Z06		
	1LT	2LT	3LT	1LT	2LT	3LT	1LZ	2LZ	3LZ
Engine hood:									
Carbon-fiber with rear opening for engine access	●	●	●	●	●	●	●	●	●
With low-profile design	●	●	●	●	●	●	–	–	–
With high-profile design	–	–	–	–	–	–	●	●	●
Exposed carbon-fiber insert	○ ⁵	○ ⁵	○ ⁵	○ ⁵	○ ⁵	○ ⁵	○ ⁵	○ ⁵	○ ⁵
Grille:									
Z06-style with Satin Black accent	–	–	–	●	●	●	–	–	–
Z06-style with Carbon Flash accent	–	–	–	–	–	–	●	●	●
Xenon high-intensity discharge headlamps and upper LED daytime running lamps									
	●	●	●	●	●	●	●	●	●
Exterior vents:									
Painted in body-color	○ ⁶	○ ⁶	○ ⁶	○ ⁶	○ ⁶	○ ⁶	○ ⁶	○ ⁶	○ ⁶
Painted in Shark Gray	○ ⁷	○ ⁷	○ ⁷	○ ⁷	○ ⁷	○ ⁷	○ ⁷	○ ⁷	○ ⁷
Mirrors:									
Outside heated power-adjustable body-color	●	–	–	●	–	–	●	–	–
Outside heated power-adjustable body-color with driver-side auto-dimming feature	–	●	●	–	●	●	–	●	●
Carbon Flash-painted mirrors and spoiler	○ ⁶	○ ⁶	○ ⁶	–	–	–	–	–	–
Carbon Flash-painted mirrors	–	–	–	○ ⁶	○ ⁶	○ ⁶	○ ⁶	○ ⁶	○ ⁶
Convertible:									
Full power top with remote activation, includes glass rear window with integral defroster	●	●	●	●	●	●	●	●	●
Carbon-fiber tonneau cover inserts	○	○	○	○	○	○	○	○	○
Capless fueling	●	●	●	●	●	●	●	●	●
Rocker extensions and wider fenders and rear fascia	–	–	–	●	●	●	●	●	●
Rear fender air ducts:									
Low-profile design	●	●	●	–	–	–	–	–	–
High-profile design in body-color	–	–	–	●	●	●	–	–	–
High-profile design in Carbon Flash	–	–	–	–	–	–	●	●	●
COUPE REMOVABLE ROOF PANEL OPTIONS									
One-piece body-color carbon-fiber roof panel	●	●	●	●	●	●	●	●	●
One-piece transparent roof panel	○	○	○	○	○	○	○	○	○
One-piece visible carbon-fiber roof panel with body-color surround	–	○	○	–	○	○	○	○	○
Body-Color Dual Roof Package: Body-color roof panel and transparent roof panel	–	○	○	–	○	○	–	○	○
Carbon-Fiber Dual Roof Package: Visible carbon-fiber roof panel with body-color surround and transparent roof panel	–	○	○	–	○	○	–	○	○

¹ Requires available Z51 Performance Package. ² These wheels are paired with summer-only tires. Do not use summer only tires in winter conditions, as it would adversely affect vehicle safety, performance and durability. Use only GM-approved tire and wheel combinations. Unapproved combinations may change the vehicle's performance characteristics. For important tire and wheel information, go to <https://my.chevrolet.com/learnAbout/chevrolet-tires> or see your dealer for details. ³ Requires available Z07 Performance Package. ⁴ Not available with Z07 Performance Package or carbon ceramic high-performance brake system. ⁵ Not available with any stripe or decal package. ⁶ Not available with Black exterior color. ⁷ Not available with Watkins Glen Gray Metallic exterior color. ⁸ Not available with any other stripe package. ⁹ Requires available Grand Sport Heritage Package. ¹⁰ A NOTE ON CHILD SAFETY: Always use safety belts and the correct child restraint for your child's age and size, even with air bags. Even in vehicles equipped with the Passenger Sensing System, children are safer when properly secured in a rear seat in the appropriate infant, child or booster seat. Never place a rear-facing infant restraint in the front seat of any vehicle equipped with an active frontal air bag. See the Owner's Manual and the child safety seat instructions for more safety information. ¹¹ Visit onstar.com for coverage map, details and system limitations. ¹² Not compatible with all devices. ¹³ Not available on all VINs. Subject to restrictions and approval. Available on sold orders only.

STANDARD AND AVAILABLE FEATURES

	STINGRAY			GRAND SPORT			Z06		
GRAPHICS	1LT	2LT	3LT	1LT	2LT	3LT	1LZ	2LZ	3LZ
Hood Stinger Stripe Package ⁸	○	○	○	○	○	○	○	○	○
Full-Length Dual Racing Stripe Package ⁸	○	○	○	○	○	○	○	○	○
Full-Length Racing Decal Package ⁸	○	○	○	○	○	○	○	○	○
Grand Sport Center Stripe Package	–	–	–	○ ⁹	○ ⁹	○ ⁹	–	–	–
Grand Sport Heritage Package Fender Hash Marks	–	–	–	○ ⁹	○ ⁹	○ ⁹	–	–	–
WHEELS²									
19" x 8.5" front and 20" x 10" rear									
Z51-style 5-split-spoke Silver-painted aluminum	●	●	●	–	–	–	–	–	–
Z51-style 5-split-spoke aluminum in Black	○	○	○	–	–	–	–	–	–
Z51-style 5-split-spoke machined-aluminum in Black	○	○	○	–	–	–	–	–	–
Z51-style 5-split-spoke aluminum in chrome	○	○	○	–	–	–	–	–	–
Z51-style 5-split-spoke aluminum in Satin Black with Red stripe	○	○	○	–	–	–	–	–	–
Z51-style 5-split-spoke, Black-painted with Yellow stripe aluminum	○	○	○	–	–	–	–	–	–
Motorsports polished-aluminum	○	○	○	–	–	–	–	–	–
Motorsports Black-painted aluminum	○	○	○	–	–	–	–	–	–
Torque-directional Silver-painted aluminum	○	○	○	–	–	–	–	–	–
Torque-directional chrome aluminum	○	○	○	–	–	–	–	–	–
19" x 10" front and 20" x 12" rear									
Grand Sport aluminum in Pearl Nickel	–	–	–	●	●	●	–	–	–
Grand Sport aluminum in Black	–	–	–	○	○	○	–	–	–
Grand Sport machined-face aluminum	–	–	–	○	○	○	–	–	–
Grand Sport aluminum in chrome	–	–	–	○	○	○	–	–	–
Grand Sport aluminum in Satin Black with Red stripe	–	–	–	○	○	○	–	–	–
19" x 10" front and 20" x 10" rear									
Z06 aluminum in Pearl Nickel	–	–	–	–	–	–	●	●	●
Z06 aluminum in Black	–	–	–	–	–	–	○	○	○
Z06 machined-groove aluminum in Spectra Gray	–	–	–	–	–	–	○	○	○
Z06 aluminum in chrome	–	–	–	–	–	–	○	○	○
Z06 aluminum in Satin Black with Red stripe	–	–	–	–	–	–	○	○	○
Z06 10-spoke blade aluminum in Pearl Nickel	–	–	–	–	–	–	○	○	○
Z06 Black-painted aluminum with Yellow stripe	–	–	–	–	–	–	○	○	○
SAFETY & SECURITY									
Active Handling System with all-speed Traction Control	●	●	●	●	●	●	●	●	●
Frontal and side-impact air bags ¹⁰ for driver and passenger with Passenger Sensing System	●	●	●	●	●	●	●	●	●
Front curb view parking cameras	–	●	●	–	●	●	–	●	●
OnStar [®] Guidance Plan ¹¹ (standard for the first 3 months; trial excludes Hands-Free Calling minutes), includes Automatic Crash Response and Turn-by-Turn Navigation	●	●	●	●	●	●	●	●	●
Power-programmable door locks with lockout protection	●	●	●	●	●	●	●	●	●
Keyless Open and Start	●	●	●	●	●	●	●	●	●
Rear vision camera	●	●	●	●	●	●	●	●	●
Theft-deterrent system:									
Vehicle immobilizer and audible/visual alarm	●	●	●	●	●	●	●	●	●
Content theft alarm for security content and unauthorized entry	–	●	●	–	●	●	–	●	●
Run-flat summer-only performance tires ²	●	●	●	●	●	●	●	●	●
Tire Pressure Monitoring System	●	●	●	●	●	●	●	●	●

	STINGRAY			GRAND SPORT			Z06		
INTERIOR	1LT	2LT	3LT	1LT	2LT	3LT	1LZ	2LZ	3LZ
Dual-zone automatic climate control with individual settings for driver and passenger, dedicated passenger controls and outside temperature display	●	●	●	●	●	●	●	●	●
Air filtration system with pollen filter	●	●	●	●	●	●	●	●	●
Color Head-Up Display with readouts for four modes, including Track mode with g-meter, vehicle speed and engine rpm	–	●	●	–	●	●	●	●	●
Driver Information Center with reconfigurable 8-inch diagonal color display; includes trip/fuel information, vehicle information, vehicle settings and driver mode settings for Tour, Sport and Track modes	●	●	●	●	●	●	●	●	●
Carbon-fiber trim on the instrument panel	–	○	○	–	○	○	–	○	○
3-spoke leather-wrapped flat-bottom steering wheel with mounted controls for audio, cruise and Driver Information Center	●	●	●	●	●	●	●	●	●
Leather-wrapped shift knob	●	●	●	●	●	●	●	●	●
Power tilt and telescopic steering column	●	●	●	●	●	●	●	●	●
Electronic cruise control with Set and Resume Speed	●	●	●	●	●	●	●	●	●
Floor console with two covered cup holders, two auxiliary power outlets, two USB ports, ¹² auxiliary input jack and storage	●	●	●	●	●	●	●	●	●
Console-mounted passenger assist handle	●	●	●	●	●	●	●	●	●
Storage: Electric locking glove box, motorized hidden storage behind 8-inch diagonal touch-screen (includes USB port ¹³), center console and rear compartment with cover	●	●	●	●	●	●	●	●	●
Lighting: Courtesy, cargo and glove box	●	●	●	●	●	●	●	●	●
Auto-dimming frameless rearview mirror	–	●	●	–	●	●	–	●	●
Illuminated visor vanity mirrors for driver and passenger	●	●	●	●	●	●	●	●	●
Universal Home Remote with 3-channel programmable transmitter for garage door opener, located on driver visor	–	●	●	–	●	●	–	●	●
Premium carpeted floor mats	●	●	●	●	●	●	●	●	●
Power windows with express-up/-down feature	●	●	●	●	●	●	●	●	●
Push-button hatch/trunk release with cinching latch	●	●	●	●	●	●	●	●	●
Cargo luggage shade (coupe)	–	●	●	–	●	●	–	●	●
Cargo net	–	●	●	–	●	●	–	●	●
Customer selectable VIN ending ¹³	○	○	○	○	○	○	○	○	○
Custom-made interior plaque personalized with your name and VIN	○	○	○	○	○	○	○	○	○
Corvette Museum Delivery: Includes Corvette Museum logo plaque personalized with your name (acknowledgment form required)	○	○	○	○	○	○	○	○	○

STANDARD AND AVAILABLE FEATURES (CONTINUED)

SEATING	STINGRAY			GRAND SPORT			Z06		
	1LT	2LT	3LT	1LT	2LT	3LT	1LZ	2LZ	3LZ
Interior trim and seats only in interior color	●	–	–	●	–	–	●	–	–
Interior trim, seats, console, door armrests and instrument panel in interior color	–	●	●	–	●	●	–	●	●
Custom Leather-Wrapped Interior Package includes leather-wrapped instrument panel, upper door trim panels and console storage cover	–	–	●	–	–	●	–	–	●
Sueded Microfiber-Wrapped Upper Interior Trim Package includes sueded microfiber headliner, visors, trim above windshield and rear window, A-pillar trim and area around quarter windows (coupe); sueded microfiber visors, trim above windshield and A-pillar trim (convertible)	–	–	●	–	–	●	–	–	●
GT bucket seats:									
Mulan leather seating surfaces	●	●	–	●	●	–	●	●	–
Napa leather seating surfaces	–	–	●	–	–	●	–	–	●
Leather seating surfaces and sueded microfiber inserts ¹	–	○	○	–	○	○	–	○	○
Competition Sport bucket seats:									
Leather seating surfaces and sueded microfiber inserts ¹	○	○	○	○	○	○	○	○	○
Mulan leather seating surfaces	–	○	○	–	○	○	–	○	○
Two-tone seats	–	○ ²	○ ²	–	○ ²	○ ²	–	○ ²	○ ²
Red safety belts	○	○	○	○	○	○	○	○	○
Custom stitching on seats, instrument panel, doors, console, shifter, boot and shift paddles:									
Yellow	–	–	○ ³	–	–	○ ³	–	–	○ ³
Red	–	–	○ ³	–	–	○ ³	–	–	○ ³
Blue	–	–	○ ³	–	–	○ ³	–	–	○ ³
8-way power seat adjusters	●	●	●	●	●	●	●	●	●
Power bolster and power lumbar adjusters	–	●	●	–	●	●	–	●	●
Heated and vented seats	–	●	●	–	●	●	–	●	●
Memory Package: Recalls two driver settings for 8-way power seat, outside mirrors and tilt/telescoping steering column	–	●	●	–	●	●	–	●	●

ENTERTAINMENT	STINGRAY			GRAND SPORT			Z06		
	1LT	2LT	3LT	1LT	2LT	3LT	1LZ	2LZ	3LZ
Chevrolet MyLink™ Radio ⁴ with 8-inch diagonal color touch-screen display with motorized power up/down and hidden storage with USB ports ⁵ ; AM/FM/HD stereo, Siri [®] Eyes Free ⁶ ; Text Message Alerts ⁷ ; voice-activated technology, and Android Auto™ and Apple CarPlay™ compatibility ⁸ ; now includes the ability to browse, select and install apps on the MyLink system with Shop ⁹	●	●	–	●	●	–	●	●	–
Chevrolet MyLink Radio ⁴ with Navigation and 8-inch diagonal color touch-screen display, includes Chevrolet MyLink Radio features plus enhanced navigation and SiriusXM NavTraffic ¹⁰ with 12-month trial subscription and Performance Data Recorder	○	○	●	○	○	●	○	○	●
Bluetooth [®] wireless technology and audio streaming ⁷ for select phones	●	●	●	●	●	●	●	●	●
SiriusXM Satellite Radio ¹⁰ , featuring over 150 channels of satellite radio, including premium programming and access to over 150 channels of SiriusXM Internet Radio on a computer, smartphone or tablet									
All Access Package with 3-month trial subscription	●	–	–	●	–	–	●	–	–
All Access Package with 12-month trial subscription	–	●	●	–	●	●	–	●	●
9-speaker Bose [®] sound system	●	–	–	●	–	–	●	–	–
10-speaker Bose Centerpoint [®] Surround Sound system	–	●	●	–	●	●	–	●	●
OnStar 4G LTE and built-in Wi-Fi [®] hotspot for up to seven devices ¹¹ ; includes data trial for 3 months or 3 GB (whichever comes first)	●	●	●	●	●	●	●	●	●
OnStar Basic Plan ¹² for five years includes select features of the myChevrolet Mobile App ¹³ , including remote start (if equipped), door lock or unlock, honk your horn and flash your lights, send destinations to your Chevrolet MyLink ⁴ navigation screen (if equipped). Limited OnStar services include Advanced Diagnostics and Dealer Maintenance Notification	●	●	●	●	●	●	●	●	●

STANDARD AND AVAILABLE FEATURES (CONTINUED)

PACKAGES	STINGRAY			GRAND SPORT			Z06		
	1LT	2LT	3LT	1LT	2LT	3LT	1LZ	2LZ	3LZ
Z51 Performance Package Dry-sump oil system; performance gear ratios; eLSD; larger front brakes (13.6" vs. 12.6") with Black calipers; slotted brake rotors; Z51 performance suspension with specific shocks, springs and stabilizer bars; performance exhaust, differential and transmission cooling; heavy-duty engine cooling; Aero Package that reduces lift for high-speed stability	○	○	○	–	–	–	–	–	–
Battery Protection Package	○	○	○	○	○	○	○	○	○
Chrome Badge Package	●	●	●	●	●	●	○	○	○
Carbon Flash Badge Package	○	○	○	○	○	○	●	●	●
Carbon Flash Painted Ground Effects Package Carbon Flash-painted splitter and rockers, and more aggressive rear spoiler	○	○	○	○	○	○	○	○	○
Visible Carbon Fiber Ground Effects Package Visible carbon-fiber splitter and rockers, and more aggressive rear spoiler	–	–	–	○	○	○	○	○	○
Z07 Performance Package Carbon-ceramic high-performance brake system, Z07 suspension with Magnetic Selective Ride Control™ and Michelin® Pilot® Super Sport Cup 2 run-flat summer-only tires. ¹⁴ Z06 includes Level 3 Aero Package, splitter end plates and clear adjustable wickerbill	–	–	–	○	○	○	○ ¹⁵	○ ¹⁵	○ ¹⁵

PACKAGES (CONTINUED)	STINGRAY			GRAND SPORT			Z06		
	1LT	2LT	3LT	1LT	2LT	3LT	1LZ	2LZ	3LZ
Grand Sport Heritage Package Fender hash marks, brushed-aluminum interior hash marks and floor mats with Grand Sport logo	–	–	–	○	○	○	–	–	–
Carbon 65 Edition Carbon 65 fender graphics, Carbon 65 door graphics, Carbon Flash Badge Package, exposed carbon-fiber weave hood insert, Visible Carbon Fiber Ground Effects Package, carbon flash-painted outside mirrors, Grand Sport Black-painted machined groove aluminum wheels or Z06 Black blade machined-groove aluminum wheels ¹⁴ , exposed carbon-fiber rear spoiler, carbon-fiber wheel center caps with Crossed Flags logo, carbon edition sill plates, Blue-painted calipers and Blue custom leather stitch	–	–	–	–	–	○ ¹⁵	–	–	○ ¹⁶

Available exterior colors: Long Beach Red Metallic¹⁷, Watkins Glen Gray Metallic, Arctic White, Blade Silver Metallic, Black, Corvette Racing Yellow Tintcoat,¹⁷ Black Rose Metallic,¹⁷ Ceramic Matrix Gray Metallic, Torch Red and Admiral Blue

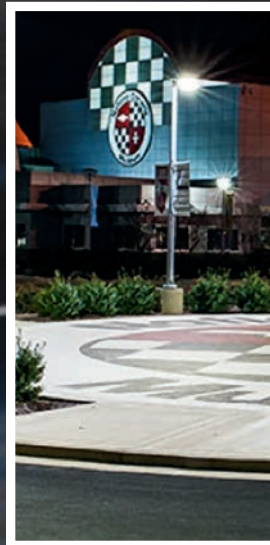
Available interior colors: Jet Black, Gray, Kalahari, Adrenaline Red, Blue, Spiced Red and Tension Blue

Available convertible top colors: Black, Kalahari, Gray, Blue and Spice Red

1 Includes sueded microfiber-wrapped flat-bottom steering wheel. **2** Requires Gray or Adrenaline Red interior. Not available with Competition Sport bucket seats. **3** Requires Jet Black interior and carbon-fiber instrument panel trim or Jet Black sueded interior. **4** Full functionality requires compatible Bluetooth and smartphone, and USB connectivity for some devices. Map coverage available in the United States, Puerto Rico and Canada. **5** Not compatible with all devices. **6** Requires compatible iPhone running iOS 6 or later. **7** Go to my.chevrolet.com/learn to find out which phones are compatible with the vehicle. **8** Vehicle user interfaces are products of Apple and Google and their terms and privacy statements apply. Requires compatible smartphone and data plan rates apply. **9** Visit chevrolet.com for details about Shop. **10** If you decide to continue service after your trial, the subscription plan you choose will automatically renew thereafter and you will be charged according to your chosen payment method at then-current rates. Fees and taxes apply. To cancel, you must call SiriusXM at 1-866-635-2349. See SiriusXM Customer Agreement for complete terms at siriusxm.com. All fees and programming subject to change. For more information about Travel Link and NavTraffic, visit siriusxm.com/infotainment. **11** Requires a compatible mobile device, active OnStar service and data plan. 4G LTE service available in select markets. Visit onstar.com for coverage map, details and system limitations. Data plans provided by AT&T. **12** Does not include emergency or security services. Visit onstar.com for coverage map, details and system limitations. **13** Requires data plan, compatible vehicle and compatible device. Some features require factory-installed remote start, power locks, Tire Pressure Monitoring System or active OnStar service. **14** Do not use summer only tires in winter conditions, as it would adversely affect vehicle safety, performance and durability. Use only GM-approved tire and wheel combinations. Unapproved combinations may change the vehicle's performance characteristics. For important tire and wheel information, go to <https://my.chevrolet.com/learnAbout/chevrolettires> or see your dealer for details. **15** Requires Carbon Flash Painted Ground Effects Package or Visible Carbon Fiber Ground Effects Package. **16** Also includes visible carbon-fiber roof panel with body-color surround and blackout roof decal. Requires Jet Black leather seating surfaces with sueded microfiber inserts and Cermaic Matrix Gray Metallic. Not available with painted exterior vents. Grand Sport models not available with Grand Sport Heritage Package. Convertible includes carbon fiber tonneau inserts and Blue top. **17** Extra-cost color.

CORVETTE EXPERIENCE

EXPERIENCE IT LIKE
NEVER BEFORE.





OFFICIAL CORVETTE HIGH-PERFORMANCE DRIVING SCHOOL

Every new Corvette comes with an invitation for a discounted rate of \$1,000 on an exclusive two-day course at the Ron Fellows Performance Driving School at Spring Mountain Motor Resort and Country Club in Pahrump, Nevada. Breakfast, lunch and an overnight stay are included.

Valid for first purchaser or lessee of a new 2017-2018 Corvette only. You will be responsible for all related travel expenses. Transportation to/from the event and all related travel expenses are the responsibility of participant. Participant must register and complete Driving School program within one year from date of new Corvette vehicle delivery. Promotion subject to change or termination at any time without notice.

CORVETTE MUSEUM DELIVERY WITH INTERIOR LOGO PLAQUE

Take delivery of your new Corvette right on the showroom floor of the National Corvette Museum. You and three guests will receive a private tour of the Bowling Green Assembly Plant and National Corvette Museum and a personalized demonstration of your car's features by a Corvette product expert. In addition, you'll be given a one-year Museum membership, an exterior door jamb decal, a personalized interior plaque and a personalized wall plaque.

PERSONALIZED INTERIOR PLAQUE

Personalize your Corvette with a plaque on the front center console of your new car's dash. This plaque features your name, Vehicle Identification Number and the Crossed Flags logo.

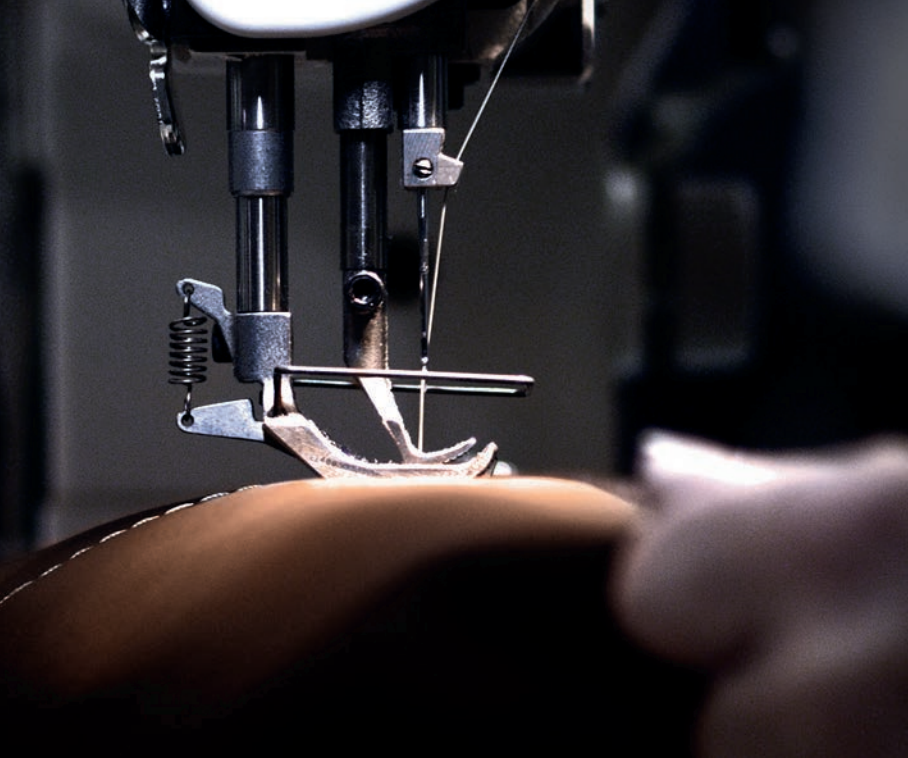
This option is available only with a sold customer order. The dealer will be contacted after the order is accepted for production and is assigned a targeted production week to confirm plaque information. Aftermarket personalized plaques are available through the National Corvette Museum.

A one-year membership to the National Corvette Museum is included with every Corvette purchase. See your Chevrolet Dealer or visit chevrolet.com for important details and program requirements. Contact the National Corvette Museum at (800) 205-4248 for more details regarding the Corvette VIP Buyers Tour. Programs subject to change or elimination without notice.



**CUT FROM THE
SAME CLOTH.**





DESIGNED, ENGINEERED, TESTED AND BACKED BY CHEVROLET

Corvette Accessories are completely in tune with the engineering and design standards set forth by Corvette. They've been designed and engineered to fit just right and work alongside the systems and components of your Corvette, no matter where you drive.

The windscreens available on convertible models have been tested for wind noise at speeds of up to 125 mph to make sure they perform quietly. Plus, our available carbon-fiber ground effects are track-tested to meet all Corvette performance requirements, while their clearcoat paint has endured a rigorous 10-year cycle test to help maintain the proper appearance standards.

When it comes to personalization, there's only one choice for your legendary sports car.



ACCESSORIES

ACCESSORIES

CREATE YOUR
OWN LEGEND.



GROUND EFFECTS

STINGRAY EXPOSED CARBON FIBER GROUND EFFECTS PACKAGE

P/N 84139800.
MSRP*: \$4,000.

Also available in Carbon Flash Metallic.

STRIPES

STINGRAY DUAL RACING STRIPE PACKAGE

Available for coupe and convertible. Shown in Carbon Flash.
P/N 22989110.
MSRP*: \$900.

Also available in Crystal Red, Gray, Orange, Silver and Yellow.

GRILLES

Z06 GRILLE KIT

With Front Camera.
P/N 84115259.
MSRP*: \$550.

Without Front Camera.
P/N 84115258.
MSRP*: \$325.



SPOILERS

1. STINGRAY HIGH WING SPOILER

Available for coupe and convertible. Shown in Black.

P/N 22908984.

MSRP*: \$495.

Also available in Arctic White, Long Beach Red, Admiral Blue, Watkins Glen Gray Metallic, Blade Silver, Torch Red and Corvette Racing Yellow.

2. STINGRAY BLADE SPOILER

Available for coupe and convertible. Shown in Torch Red.

P/N 22967767.

MSRP*: \$495.

Also available in Carbon Flash, Arctic White, Black, Long Beach Red, Watkins Glen Gray Metallic, Blade Silver and Corvette Racing Yellow.

3. Z06 AND GRAND SPORT EXPOSED CARBON-FIBER SPOILER

Available for coupe and convertible.

P/N 84133913.

MSRP*: \$2,400.

4. Z06-STYLE SPOILER WITH CLEAR BRIDGE (STINGRAY)

Available for coupe and convertible. Shown in Watkins Glen Gray Metallic.

P/N 84165142.

MSRP*: \$950.

Also available in Torch Red, Arctic White, Carbon Flash Metallic and Admiral Blue.

**Manufacturer's Suggested Retail Price. Tax and installation extra.*

ACCESSORIES



UNDERHOOD LINERS

1. GRAND SPORT LOGO ON A BLACK FIELD
P/N 23321670.
MSRP*: \$270.



2. CROSSED FLAGS LOGO ON A BLACK FIELD
P/N 23489882.
MSRP*: \$255.

3. STINGRAY LOGO ON A BLACK FIELD
P/N 23489883.
MSRP*: \$255.



AERO PANELS

4. STINGRAY FRONT AERO PANEL IN CARBON FLASH
P/N 84118310.
MSRP*: \$160.

SPLASH GUARDS

5. STINGRAY FRONT AND REAR MOLDED IN BLACK
Front, P/N 22935635. Rear, P/N 22935639.
MSRP*: \$75.



HOOD STRIPE

6. HOOD STINGER STRIPE PACKAGE
Shown in Carbon Flash, available for coupe and convertible.

P/N 22989107.
MSRP*: \$250.



HASH MARKS

7. GRAND SPORT FENDER HASH MARKS
Shown in Carbon Flash.
P/N 23507123.
MSRP*: \$175.

Also available in Torch Red, Yellow, Shark Gray and Hyper Green.



ROOF PANELS

8. STINGRAY COUPE REMOVABLE ROOF PANEL (TRANSPARENT)

P/N 23242417.
MSRP*: \$2,100.

9. ROOF PANEL STOWAGE BAG IN BLACK WITH CORVETTE LOGO

P/N 23148691.
MSRP*: \$130.



**Manufacturer's Suggested Retail Price. Tax and installation extra.*

ACCESSORIES

HELP PROTECT WHAT
YOU LOVE.



1

COVERS

1. CORVETTE C7.R RACING PREMIUM

INDOOR COVER

Fits all 14MY–18MY Corvette models.

P/N 23481362.

MSRP*: \$1,195.

2. FULLY RENDERED GRAND SPORT PREMIUM

INDOOR COVER

Fits all 17MY–18MY Grand Sport models.


P/N 84025014.

MSRP*: \$1,195.



2

*Manufacturer's Suggested Retail Price. Tax and installation extra.

1  Non-GM warranty. 3M™ provides a 3-year/36,000-mile manufacturer's warranty. For details on the warranty provided by 3M™ please see your dealer.



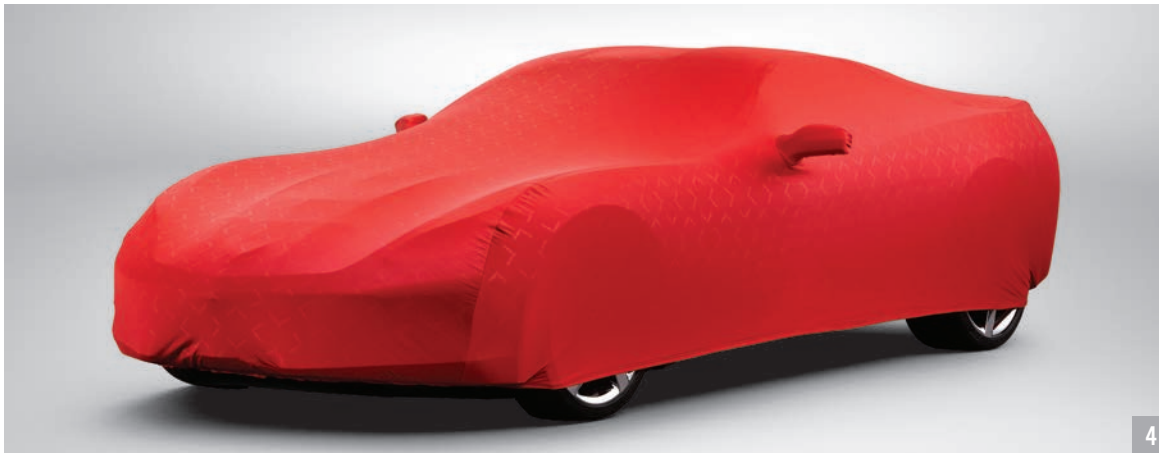
3



5



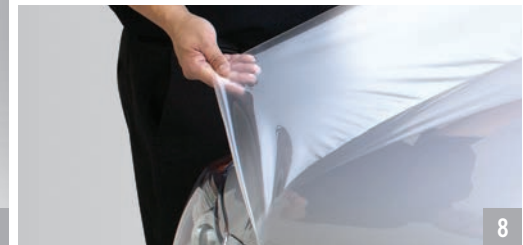
6



4



7



8

3. STINGRAY LOGO PREMIUM INDOOR DUST COVER

Fits all 14MY–18MY Corvette models.
P/N 23142883.
MSRP*: \$400.

4. CROSSED FLAGS LOGO PREMIUM INDOOR DUST COVER

Fits all 14MY–18MY Corvette models. Shown in Red.
P/N 23142888.
MSRP*: \$400.
Also available in Black, Kalahari and Gray.

5. STINGRAY LOGO OUTDOOR ALL-WEATHER COVER

Fits all 14MY–18MY Corvette models. Shown in Black.
P/N 23142884.
MSRP*: \$425.
Also available in Gray.

6. Z06 PREMIUM INDOOR DUST COVER

Fits all 15MY–18MY Z06 models. Shown in Black.
P/N 23187874.
MSRP*: \$425.
Also available in Blue.

7. Z06 PREMIUM OUTDOOR ALL-WEATHER COVER

Fits all 15MY–18MY Z06 models. Shown in Red.
P/N 23187877.
MSRP*: \$450.
Also available in Gray.

8. 3M™ SCOTCHGARD™ PAINT PROTECTION FILM-PRO SERIES¹

Fits 16MY–18MY Corvette Stingray and Z06 models. Includes film for hood, fenders, mirrors, front bumpers, door edge guards and door cups.
P/N 19352798 (Stingray), 19352799 (Z06).
MSRP*: \$499 (Stingray), \$579 (Z06).

ACCESSORIES



1



3



5



2



4



6

FLOOR AND CARGO MATS

1. STINGRAY LOGO PREMIUM FRONT CARPET FLOOR MATS

Shown in Black with Adrenaline Red Stitching and Stingray Logo.

P/N 23476287.

MSRP*: \$155.

Also available in Black with Gray Stitching and Black with Kalahari Stitching.

2. STINGRAY LOGO JET BLACK CARGO MAT

P/N 23469813.

MSRP*: \$195.

3. GRAND SPORT LOGO FRONT PREMIUM CARPET FLOOR MATS

Shown in Gray with Gray Stitching and Grand Sport Logo.

P/N 23384154.

MSRP*: \$155.

Also available in Black with Light Gray Stitching, Black with Torch Red Stitching, Black with Kalahari Stitching, Black with Tension Blue Stitching and Black with Jet Black Stitching.

4. GRAND SPORT LOGO JET BLACK CARGO MAT

P/N 23382978.

MSRP*: \$195.

5. Z06 LOGO PREMIUM FRONT CARPET FLOOR MATS

Shown in Black with Adrenaline Red Stitching and Z06 Logo.

P/N 23476289.

MSRP*: \$155.

6. Z06 LOGO JET BLACK ALL-WEATHER CARGO MAT

P/N 23469812.

MSRP*: \$195.



7

EMBLEMS

7. STINGRAY CARBON FLASH

P/N 23465587.

MSRP*: \$135.

Also available in Chrome (does not include Stingray emblems).



8



9

SECURITY SHADES

8. STINGRAY UPPER AND LOWER SECURITY SHADE WITH CROSSED FLAGS LOGO

Fits 1LT models.

P/N 22952948.

MSRP*: \$160.

REAR VEHICLE PROTECTION

9. REAR FASCIA AND SPOILER PROTECTOR

P/N 23124544.

MSRP*: \$85.

ACCESSORIES

TURN ON
STYLE.



STINGRAY WHEELS

TORQUE



5-SPOKE CHROME
19-INCH FRONT/20-INCH REAR WHEEL¹
Front, P/N 19302113. MSRP*: \$885 (EACH).
Rear, P/N 19302115. MSRP*: \$935 (EACH).



5-SPOKE SILVER-PAINTED
19-INCH FRONT/20-INCH REAR WHEEL¹
Front, P/N 19302114. MSRP*: \$710 (EACH).
Rear, P/N 19302116. MSRP*: \$760 (EACH).

MOTORSPORT



POLISHED WHEEL
19-INCH FRONT/20-INCH REAR WHEEL¹
Front, P/N 23246356. MSRP*: \$835 (EACH).
Rear, P/N 23246354. MSRP*: \$785 (EACH).



PAINTED GLOSS BLACK
19-INCH FRONT/20-INCH REAR WHEEL¹
Front, P/N 23334934. MSRP*: \$710 (EACH).
Rear, P/N 23334935. MSRP*: \$760 (EACH).

Z51-STYLE STRIPED



SATIN BLACK FINISH WITH RED STRIPE
19-INCH FRONT/20-INCH REAR WHEEL¹
Front, P/N 19302117. MSRP*: \$710 (EACH).
Rear, P/N 19302118. MSRP*: \$760 (EACH).



SATIN BLACK FINISH WITH YELLOW STRIPE
19-INCH FRONT/20-INCH REAR WHEEL¹
Front, P/N 19302119. MSRP*: \$710 (EACH).
Rear, P/N 19302120. MSRP*: \$760 (EACH).

Z06 WHEELS

BLADE



NICKEL PEARL-PAINTED WHEEL
19-INCH FRONT/20-INCH REAR WHEEL¹
Front, P/N 23251390. MSRP*: \$710 (EACH).
Rear, P/N 23319266. MSRP*: \$760 (EACH).



BLACK-PAINTED WITH MACHINED-GROOVE
19-INCH FRONT/20-INCH REAR WHEEL¹
Front, P/N 23251387. MSRP*: \$710 (EACH).
Rear, P/N 23319267. MSRP*: \$760 (EACH).

CORVETTE CENTER CAPS



STINGRAY LOGO
P/N 19301418.
MSRP*: \$200. (SET OF FOUR)



JAKE LOGO (BLACK)
P/N 19331659.
MSRP*: \$200. (SET OF FOUR)

Also available in
Argent.



Z51 LOGO
P/N 19301420.
MSRP*: \$200. (SET OF FOUR)

Also available in
Metallic Gray.



CARBON LOGO
P/N 19302357.
MSRP*: \$200. (SET OF FOUR)



**CROSSED FLAGS LOGO
ON BLACK**
P/N 19301416.
MSRP*: \$200. (SET OF FOUR)



**CROSSED FLAGS LOGO
ON ARGENT**
P/N 19301415.
MSRP*: \$200. (SET OF FOUR)

¹ These wheels are paired with summer-only tires. Do not use summer only tires in winter conditions, as it would adversely affect vehicle safety, performance and durability. Use only GM-approved tire and wheel combinations. Unapproved combinations may change the vehicle's performance characteristics. For important tire and wheel information, go to <https://my.chevrolet.com/learnAbout/chevrolettires> or see your dealer for details.

*Manufacturer's Suggested Retail Price. Tax and installation extra.

ACCESSORIES

UNCOVER THE
POSSIBILITIES.



1

GRAND SPORT FLOOR CONSOLE LIDS

1. LEATHER WITH GRAND SPORT LOGO

Fits all 17MY–18MY Grand Sport models. Shown in Black.

P/N 84179897.

MSRP*: \$295.

Also available in Gray, Adrenaline Red and Kalahari.

GRAND SPORT LOGO (NOT SHOWN)

Fits all 17MY–18MY Grand Sport models.

P/N 84179902.

MSRP*: \$295.

Also available in Gray, Adrenaline Red and Kalahari.



2



3

STINGRAY FLOOR CONSOLE LIDS

2. LEATHER WITH STINGRAY LOGO

Fits all 14MY–18MY Stingray models. Shown in Kalahari. P/N 23296483; Gray, P/N 23296481; Adrenaline Red, P/N 23296484; and Jet Black, P/N 23296482. MSRP*: \$295.

STINGRAY LOGO (NOT SHOWN)

Fits all 14MY–18MY Stingray models. P/N 23296446. MSRP*: \$295.

Also available in Gray, Adrenaline Red, Kalahari and Jet Black.

Z06 FLOOR CONSOLE LIDS

3. LEATHER WITH Z06 LOGO

Fits all 15MY–18MY Z06 models. Shown in Black. P/N 23296454. MSRP*: \$295. *Also available in Kalahari, and Adrenaline Red.*

Z06 LOGO (NOT SHOWN)

Fits all 15MY–18MY Z06 models. MSRP*: \$295.

Also available in Jet Black, Kalahari, Adrenaline Red and Black with Red Stitching.

**Manufacturer's Suggested Retail Price. Tax and installation extra.*

ACCESSORIES



DOOR SILL PLATES

1. GRAND SPORT LOGO

P/N 23279545.
MSRP*: \$225.

2. STINGRAY LOGO WITH CROSSED FLAGS

P/N 23487387.
MSRP*: \$225.



INTERIOR TRIM BADGES

3. CHROME WITH STINGRAY LOGO

P/N 23138326.
MSRP*: \$95.

4. BLACK WITH JAKE LOGO

P/N 23138328.
MSRP*: \$95.

BLACK WITH STINGRAY LOGO (NOT SHOWN)

MSRP*: \$95.

LT1 PERFORMANCE LOGO (NOT SHOWN)

MSRP*: \$95.



LUGGAGE

5. FIVE-PIECE LUGGAGE SET

Includes Two Roller Suitcases, Backpack, Duffel Bag and Messenger Bag.
P/N 22970472.
MSRP*: \$910.

**Manufacturer's Suggested Retail Price.
Tax and installation extra.*



BE PART OF A
RACE-PROVEN BLOODLINE.



Corvette has been designed and engineered for the track, tested and re-tested so that its driving characteristics and performance maintain legendary status. We know just what it needs – and just what you want – to amplify its braking, cornering and even its high-powered looks.

Our lineup of Chevrolet Performance Parts is tuned just right and engineered to meet the high standards of your Corvette. There is no substitute.



PERFORMANCE

PERFORMANCE PARTS

RUN UP THE
NUMBERS.



STINGRAY T1 SUSPENSION

This suspension package was developed to help improve the on-track handling capabilities of Stingray, including Z51-equipped models. It's been tuned with all-new stabilizer bars, lower control arms with stiffer handling bushings and track-optimized passive shocks. Roll stiffness has been increased (40% front and 20% rear).

P/N 23336064.
MSRP*: \$3,250.



UP TO
↑40%
MORE ROLL STIFFNESS



STINGRAY PERFORMANCE FRONT BRAKE DUCTS KIT

This available Front Brake Ducts Cooling Kit for base Corvette models includes brake ducts and deflectors that transport air from the front grille through the wheel wells to help cool the front brakes and expel heat. This can help increase airflow by 16% to increase stopping performance by reducing temperature and brake fade.

P/N 23383592.
MSRP*: \$275.

↑16%
INCREASE IN AIRFLOW



UP TO AN AVERAGE OF
↑57%
MORE BRAKE TORQUE

STINGRAY Z51 BRAKE KIT

Upgrade the brakes on your 2014+ Stingray to the greater capability of the Z51 package. It features slotted rotors with diameters measuring 345 mm in front and 338 mm in the rear. This kit increases the brake torque up to 57% on average. Also included are high-performance pads, which provide greater resistance to brake fade at track-condition rotor temperatures over 500°C. Requires spacers.

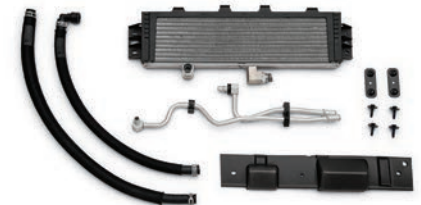
Please note: The mass dampers were removed from the stock Z51 pads in order to fit inside of the base Stingray wheels. Mass dampers are used to tune the system for brake noise, and therefore, this kit is not warrantied for noise performance. For off-road use only.

P/N 23386143.
MSRP*: \$2,495.

STINGRAY SECONDARY RADIATOR

This radiator adds additional cooling capability to manual transmission Corvette vehicles that see regular track use. This kit includes the lines and hardware necessary to mount and plumb this additional radiator to the front of any manual transmission-equipped Stingray. With the addition of this kit to a Z51 manual transmission Corvette, the radiator fluid temperatures are lowered 25°F, along with the engine oil temperatures, down 15°F.

P/N 84201727.
MSRP*: \$895.



PERFORMANCE PARTS

ATTACK THE TRACK.

Z06 is a true world-class supercar and the fastest, most powerful production Corvette ever. Stingray owners can take advantage of its numerous parts, designed to intensify handling, enhance braking and maximize cooling where you need it most – on the track.



Z06 BRAKE KITS (IRON ROTORS) FOR STINGRAY Z51

The Z06 standard Brake Upgrade Kit for Z51 vehicles features two-piece iron-slotted rotors measuring 370 mm x 34 mm in the front and 365 mm x 26 mm in the rear, with aluminum mono-block 6-piston and 4-piston fixed calipers, respectively. The front calipers feature vented pistons to help improve pad and brake fluid cooling, including pads 39% larger than those found on the stock Z51 vehicle. These calipers offer differentiated piston diameters of 30, 34 and 38 mm (leading to trailing) for even pad pressure for improved pad wear.

Please note: These brakes will not fit under stock base or Z51 wheels. Requires a minimum 4 mm wheel clearance between the outboard face of the caliper and the inner wheel spoke. This application is for off-road use only because the stock Z51 wheels do not fit over the Z06 brakes. Any failures occurring as a result of the non-production wheels selected by the customer would not be covered under the limited warranty of the brake kits.

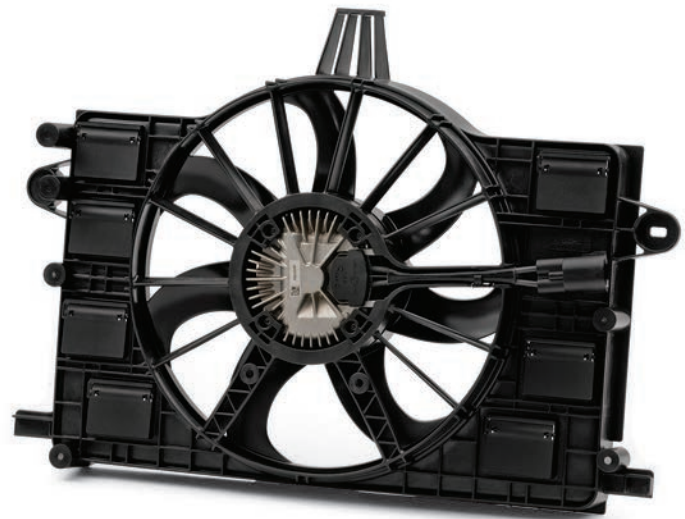
Front, P/N 23386144.
MSRP*: \$2,700.

Rear, P/N 23386145.
MSRP*: \$2,195.



↑39%

LARGER

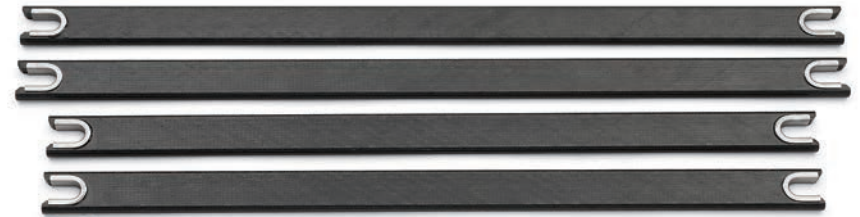


Z06 600-WATT RADIATOR FAN FOR STINGRAY

Developed to meet the Z06's track cooling requirements, this powerful cooling fan increases the fan speed over Stingray's 500-watt system for greater airflow and enhanced cooling capability. It is a direct replacement for the Stingray cooling fan.

P/N 23376530.

MSRP*: \$329.



Z06 CARBON-FIBER UNDERBODY BRACES FOR STINGRAY

Developed for the Z06, these carbon-fiber underbody braces are about 17% lighter than the aluminum braces on the Corvette Stingray, while maintaining original overall torsional stiffness.

P/N 23385708.

MSRP*: \$249.


Z06 QUARTER PANEL VENTS FOR STINGRAY Z51

Substantial airflow is critical for maintaining cooling performance on the track. The Z06 quarter vents offer larger openings for increased airflow to the transmission oil cooler and differential cooler – an approximately 25% improvement over the airflow of the Z51 at track speeds.

P/N 23373152.

MSRP*: \$195.

UP TO
 **25%**
IMPROVEMENT IN AIRFLOW

UP TO
 **17%**
LIGHTER

*Manufacturer's Suggested Retail Price. Tax and installation extra.

PERFORMANCE PARTS

TAKE IT TO THE
NEXT LEVEL.



With Corvette Z06, it's all about downforce. If you're seeking additional aerodynamic elements on your standard Z06, Chevrolet Performance offers parts that can take things to the next level.

LEVEL 2: Z06 PERFORMANCE AERO ELEMENTS (NOT SHOWN)

Z06 owners can upgrade standard Z06 models (Level 1) and achieve Level 2 aerodynamics by adding the following performance elements:

CARBON-FIBER GROUND EFFECTS
P/N 84139800.
MSRP*: \$4,000.

Z06-STYLE EXPOSED
CARBON-FIBER SPOILER
P/N 84133913.
MSRP*: \$2,400.

LEVEL 3: Z06 PERFORMANCE AERO KIT

Add a new dimension of downforce to your Corvette Z06.

This Level 3 Aero Package is an upgrade for Level 2-equipped Corvette Z06 models and adds elements from the Z07 Performance Package, including larger end plates to the front splitter and an adjustable, transparent wickerbill on the rear spoiler for track use. With this package, Z06 delivers the most downforce of any production car that GM has ever tested.

Fits all 15MY+ Corvette Z06 models.
P/N 84056038.
MSRP*: \$595.

**Manufacturer's Suggested Retail Price.
Tax and installation extra.*



Z06 100-OCTANE CALIBRATION

This calibration is optimized for track use with 100-octane fuel. The calibration changes to help improve performance with higher octane fuel have not affected emissions and this calibration is 50-State emissions legal with CARB Executive Order D-126-41. If used on the street with lower octane fuel, 93-octane rating or less, driveability issues may be experienced. In particular, it is possible that detonation, or spark knock, may occur in hot climates or hot running conditions with fuel that has a lower octane rating than 100. Spark knock results in the ECM retarding spark timing which may result in reduced engine performance. We recommend using 100-octane fuel with this calibration to maintain peak engine performance.

For 15MY-16MY Corvette Z06 models.

P/N 12677967.

MSRP*: \$350.

Z07 PERFORMANCE PACKAGE ROUGH SURFACE TRACK SUSPENSION CALIBRATION

Chevrolet Performance has developed a rough-racing-surface suspension calibration for owners of the Z06 with the Z07 Performance Package, featuring Magnetic Selective Ride Control. Dealers can "flash" this calibration into the vehicle's software if it frequently visits a very rough track or will be driving on a track with this type of surface. The calibration update only optimizes the driver selectable "Track Mode" for rough track surfaces. The remaining driver modes (Weather, Eco, Tour and Sport) remain unchanged.

For 15MY-16MY Corvette Z06 models.

P/N 23396302 (15MY), 23396303 (16MY).

MSRP*: \$325.